

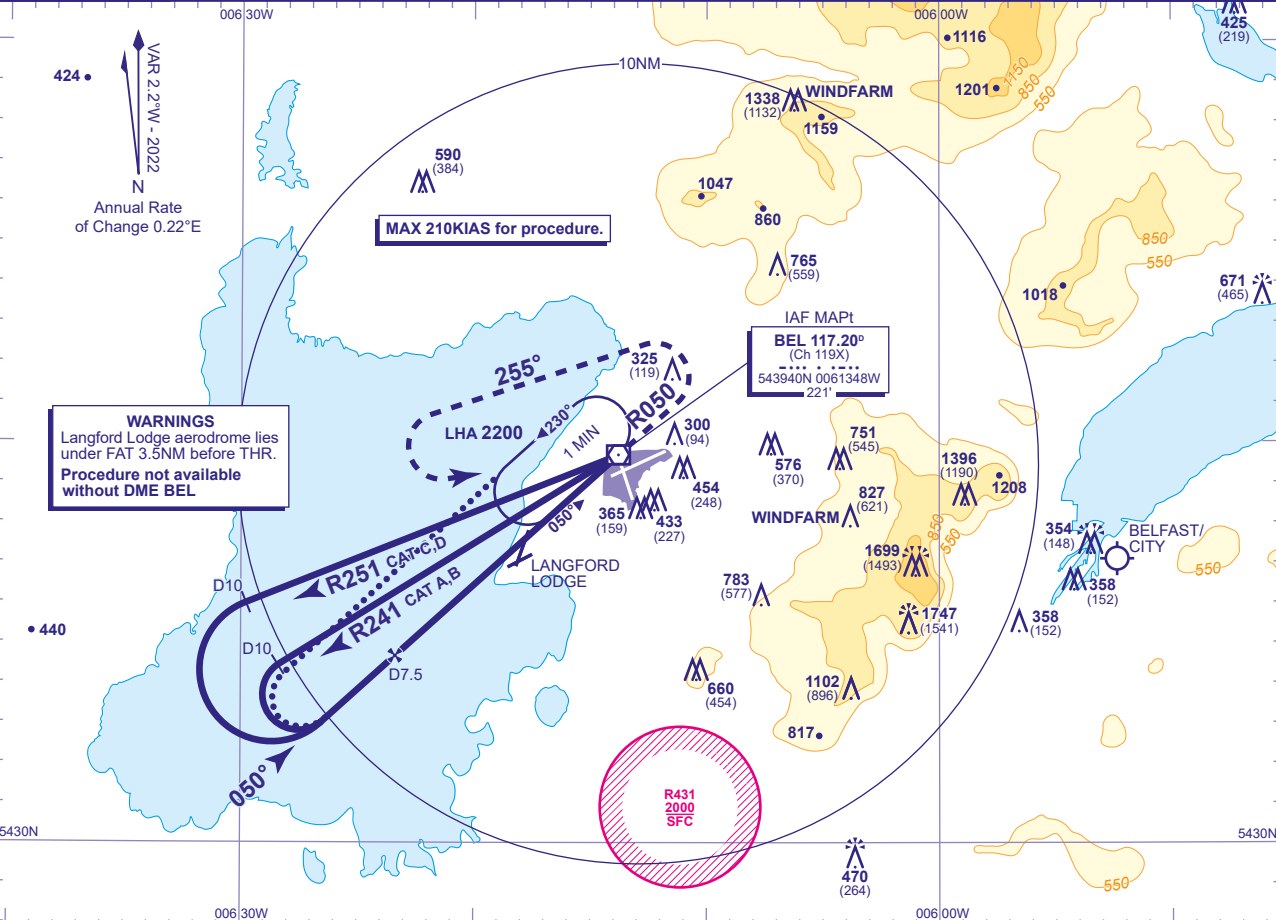
INSTRUMENT APPROACH CHART - ICAO

BELFAST ALDERGROVE

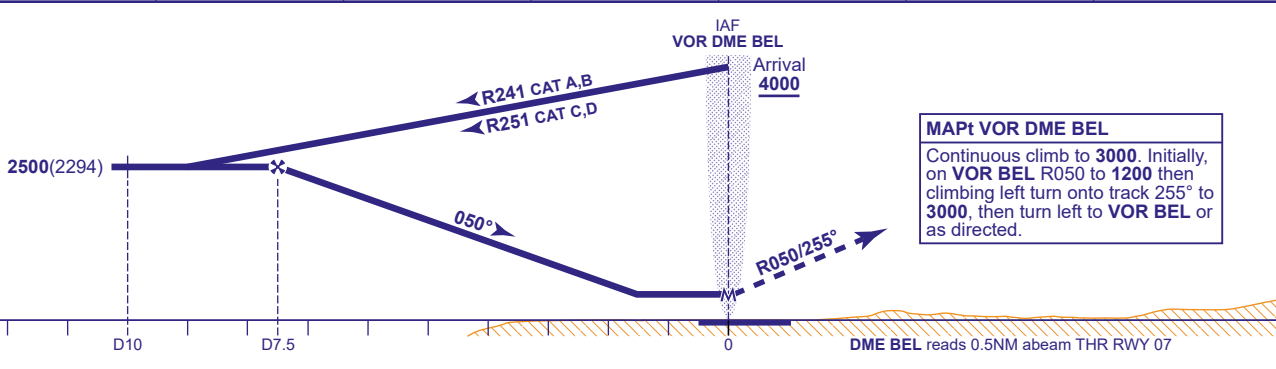
VOR/DME
RWY 07
(ACFT CAT A,B,C,D)



APP	133.125	ALDERGROVE APPROACH	AD ELEVATION	268	TRANSITION ALTITUDE 6000
TWR	118.300	ALDERGROVE TOWER	THR ELEVATION	206	
RAD	120.905	ALDERGROVE DIRECTOR	OBSTACLE ELEVATION	1747 AMSL (1541) (ABOVE THR)	
ATIS	126.130	ALDERGROVE INFORMATION	BEARINGS ARE MAGNETIC		



RECOMMENDED PROFILE Gradient 5.28%, 321FT/NM						
DME BEL	7	6	5	4	3	2
ALT(HGT)	2340(2134)	2020(1814)	1700(1494)	1380(1174)	1060(854)	740(534)



Aircraft Category		A	B	C	D	Rate of descent	G/S KT	160	140	120	100	80
OCA (OCH)	Procedure	630(424)	630(424)	1180(974)	1290(1084)		FT/MIN	860	750	640	540	430
VM(C)OCA (OCH AAL)	Total Area	750(482)	840(572)	1250(982)	1360(1092)							

ALTERNATIVE PROCEDURE EXTENDED HOLDING PATTERN
Overhead VOR BEL (IAF) extend outbound leg of holding pattern descending to 2500(2294). At BEL DME 10 turn left to intercept extended FAT, then as for main procedure.

NOTES 1 FAT is off set 16° and intercepts the RWY C/L 1.1NM from the THR (nominal BEL DME 2).
2 Aircraft will normally be required to hold not lower than 3000 at VOR BEL.

CHANGE (5/25): NW MSA INCREASE. OCA(OCH). VM(C)OCA(OCH AAL) CAT C/D.